



Biomatlante
Biologics Solutions

eXperts in bone regeneration

MBCP™

Synthetic Bone Graft

Safe solution for patient
Promote bone ingrowth
30 years of experience

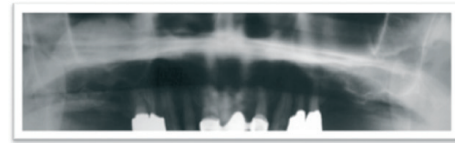


Mimic human bone

MBCP™ is a biphasic calcium phosphate ceramic composed of 60% of Hydroxyapatite and 40% of Tricalcium Phosphate Beta. HA is the closest synthetic equivalent to human bone mineral (biological apatite crystals), is biocompatible and bioactive in vivo. TCP is recognized to have great bioactivity, fast dissolution to promote the ionic exchange (Calcium and Phosphorus ions). Trabecular architecture and fine crystalline structure of the natural bone is also mimicked in MBCP through a protected know-how resulting in a permeable Macro and Micro porosity.

- The **macroporosity** (pores diameters from 300 to 600 Qm) allows the MBCP to be colonized by osteogenic cells able to form new bone at the expense of the ceramic.

- The **microporosity** (pores smaller than 10Qm) is constituted by all the spaces between the crystals ceramic. The microporosity **is necessary for the biological fluids able to promote the ionic exchanges and bioactive factors concentrations.**



Sinus Augmentation



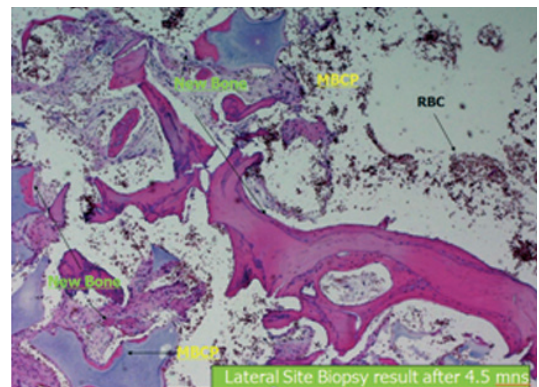
3 Months & 1 Week Before Second Stage



6 Months Final Prosthesis

Biocompatible and safe

Synthetic products have many of the same bone forming properties as human bone, and are a safe and proven alternative to autograft, allograft and animal bone. Synthetic bone eliminates risks of exposure to the possibility of mad cow disease or over under determinate prions. The effectiveness of MBCP Bone Graft Substitute has been critically evaluated during more than 25 years of clinical studies. Histologic and clinical evaluation of MBCP in sinus augmentation, alveolus and bone defect have been performed on more than 100 patients in comparison to autologous bone, and bovine. With more than 98,5% of implant survival in sinus, MBCP, combine or not with osteoinductive material, leads to predictable results for maxillary bone regeneration.



Easy to use

Indications

All bone defects. Two granules sizes are available to make easier the handling according to the selected procedure.

Granules 0,5-1mm

- . Extraction Sockets
- . Intraosseus defects
- . Defect Around Implant

Granules 1-2mm

- . Sinus Floor Augmentation
- . Ridge Augmentation
- . Ridge Reconstruction



Syringe or Vials
0,25cc - 0,5cc - 1cc
Granulometry : 0,5-1mm



Vials
1cc - 2,5cc - 5cc
Granulometry : 1-2mm



Medical Devices Class: III

Distributed by:

Manufacturer

Biomatlante

ZA Les Quatre Nations

5 Rue Edouard Belin

44360 Vigneux de Bretagne - France

www.biomatlante.com